

REMANUFACTURED RADIOGRAPHIC ROOM SPECIFICATIONS

The Ceiling Tube Mount Crane is a radiographic x-ray tube suspension system designed to facilitate a wide range of procedures.

Fully counter-balanced, the heavy-duty system moves easily throughout its entire range and minimizes operator fatigue.

The Overhead Tube Crane is ideal for all radiographic, off-table and upright requirements.

Amber Diagnostics has been refurbishing Rad Room systems since 1994. All systems can be custom refurbished to meet all of your specific financial budgets and technical requirements.

All units are tested, delivered and installed by an Amber employee insuring you and your facility quality performance and consistency that meet or exceed original manufacturer's specifications.

AMBER
DIAGNOSTICS
Saving a Life Everyday



2180 Premier Row,
Orlando, FL 32809 USA

1-888-561-7900

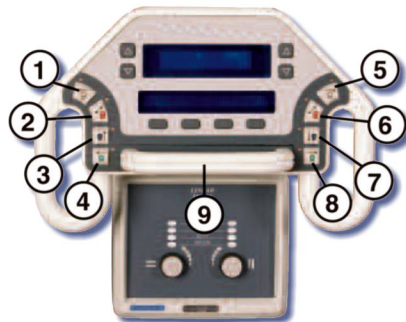
407-438-7847

Fax: 407-856-5456

www.AmberUSA.com

EQUIPMENT SPECIFICATIONS

Overhead Tube Crane



- 1. & 5. Roll Lock Release Switches
- 2. & 6. Transverse Lock Release Switches
- 3. & 7. Vertical Lock Release Switches
- 4. & 8. Longitudinal Lock Release Switches
- 9. One Hand Multi-Lock Release Switch

X-RAY SYSTEM FEATURES

- Heavy duty design for demanding caseloads
- Telescopic vertical column with fingertip controls delivers rapid, accurate positioning
- Full 360° rotation with 90° detent intervals for easy vertical positioning
- Digital position indicators for rapid determination of focal spot to table top or bucky S.I.D. distances
- Integrates with all Del Medical tables and generators
- Up to 60" (153 cm) of vertical travel
- Platform mount standard

X-ray Tube Positioning

Rotation about vertical axis (yaw): 360° (manual steps ever 90°)

Rotation about horizontal axis (roll): ±140°

Positioning Indicators

Digital display:

(1) Focal spot-to-tabletop/wall inches S.I.D. distance

(2) Focal spot-to-bucky inches S.I.D. distance

Tube angulation (roll): reads at ° increments

Locks

All locks: electromagnetic

Column rotation: mechanical, 90° detents

Longitudinal Rail Length

16' optional
14' standard

Transverse Bridge Length

10' standard

Power Requirements

120VAC, 50/60Hz, Single Phase, 1Amp
230VAC, 50/60Hz, Single Phase, 0.5Amp

System Payload Support Capability

15lbs column support, standard

Electrical

Assemblies are plug-in and modular for easy installation, calibration and service maintenance.

System Weight

130lbs (331kg)

Complies with all CDRH performance standards in effect at the date of manufacture. Specifications subject to change without notice. Made in U.S.A. - ETL Listed - CE Marked - An ISO 13485 Certified Facility

REMANUFACTURED RADIOGRAPHIC ROOM SPECIFICATIONS

EQUIPMENT SPECIFICATIONS

Overhead Tube Crane

When considering the purchase or reallocation of an existing medical asset which is restored back to its original quality level and original manufacturers specifications can prove extremely cost effective.

For many organizations, purchasing refurbished equipment is a cost-effective alternative compared to purchasing new equipment. **Savings are typically 40 to 60 percent off less than new equipment.**

With this level of savings, healthcare organizations can stretch their equipment dollars, providing for multiple requirements.

Every refurbished system comes with a comprehensive warranty.

REFURBISHING PROCESS



AESTHETICS



MECHANICAL INTEGRITY



O.E.M. SYSTEM REQUIREMENTS

AMBER
DIAGNOSTICS
Saving a Life Everyday

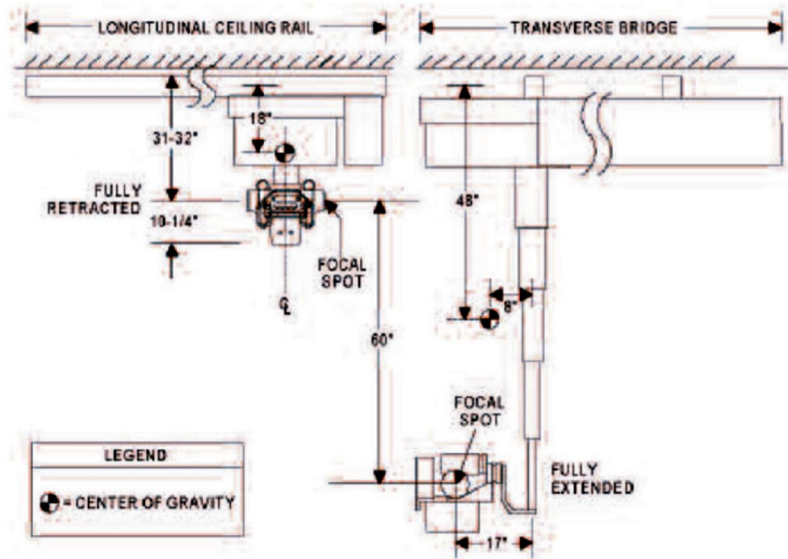
2180 Premier Row,
Orlando, FL 32809 USA

1-888-561-7900

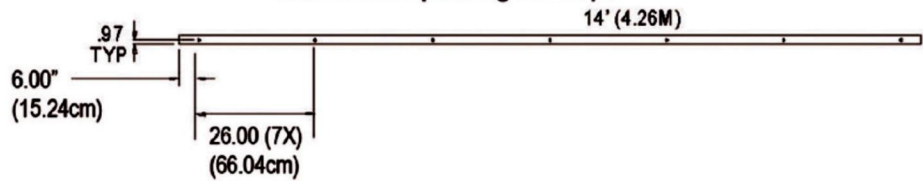
407-438-7847

Fax: 407-856-5456

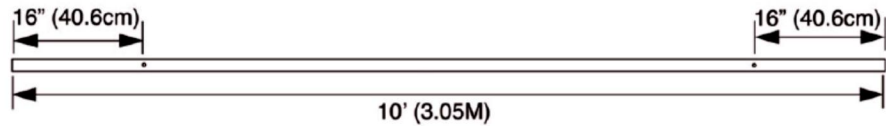
www.AmberUSA.com



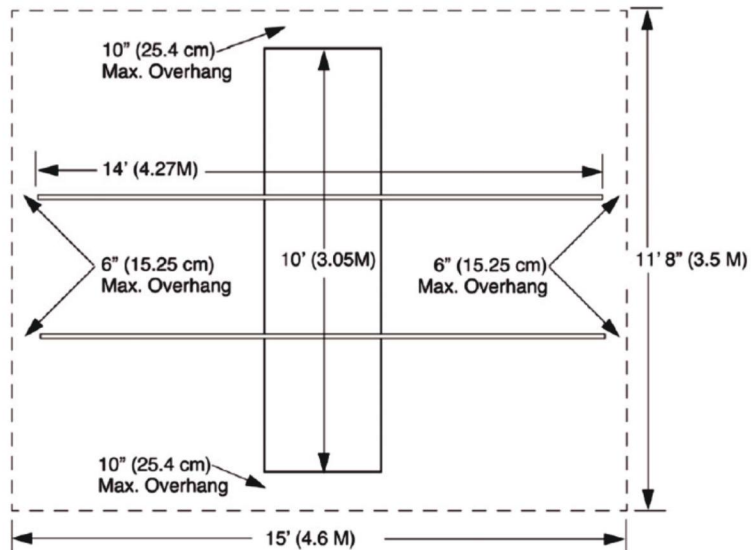
Tube Crane Operating Envelope



Longitudinal Rail Mounting Hole Pattern



Drape Rail Channel Mounting Hole Pattern



Ceiling Height: Minimum: 9'0" (274.3cm) Suggested: 9'3" (282cm)
Maximum: 9'4" (284.5cm)

Figure 2-1. OTC-3 Operating Range